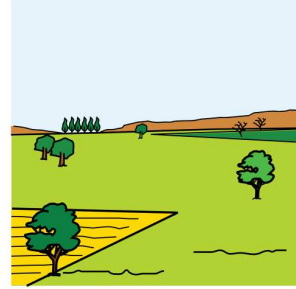
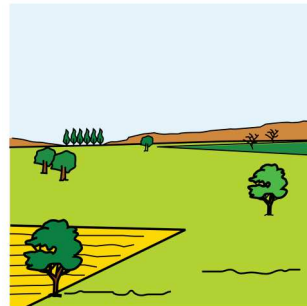
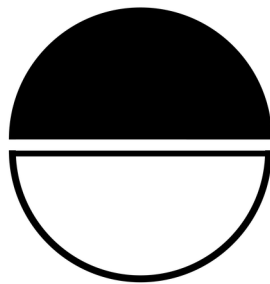


POESÍA:

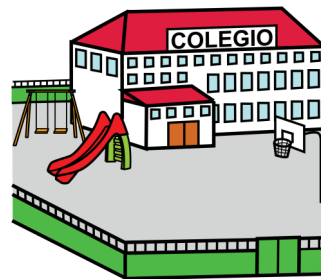
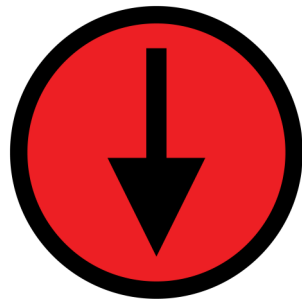
EN MEDIO DEL PRADO



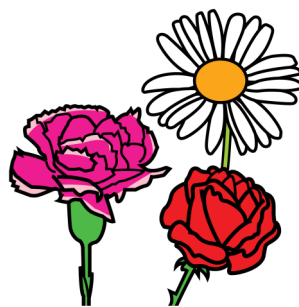
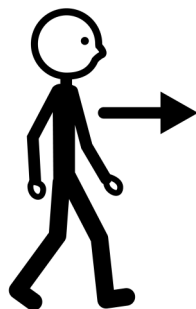
Texto: Gloria Fuertes



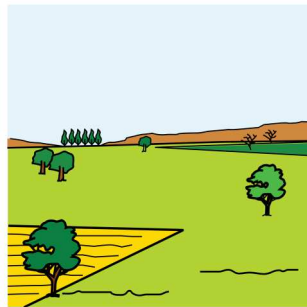
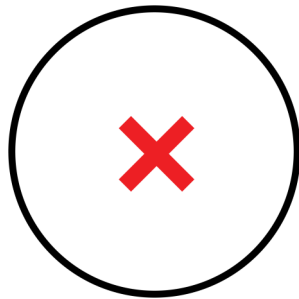
En medio del prado



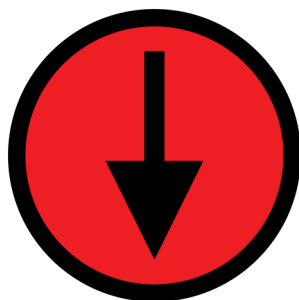
hay una escuela,



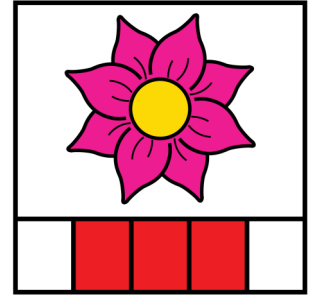
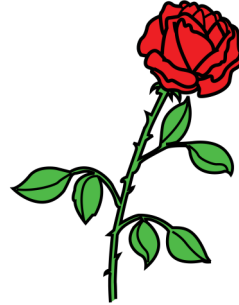
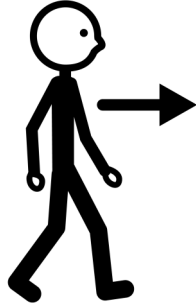
donde van las flores y las abejas.



*En el centro del prado*



*hay una escuela,*



y a ella van las rosas en primavera.

COLORIN  
COLORADO

Colorín colorado este cuento se ha acabado.